

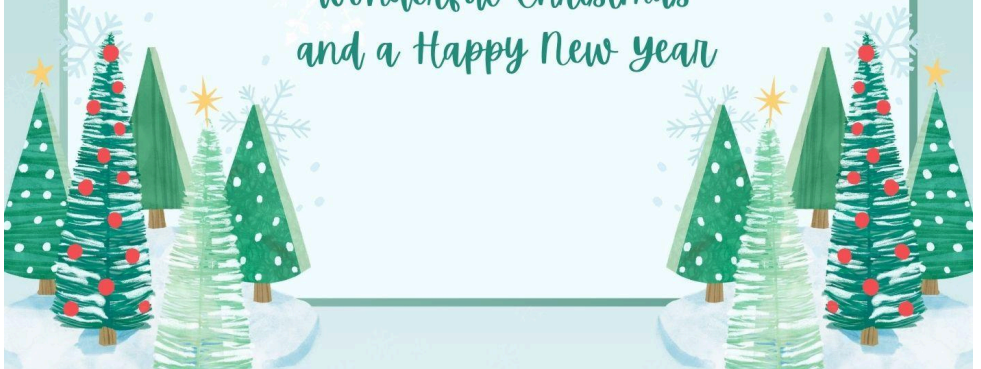
Milton Malsor News

Issue 86

Winter 2024



Wishing you all a  
wonderful Christmas  
and a Happy New year





*PARISH COUNCIL  
REPORT  
Winter 2024*



We are sorry to report that, for personal reasons, Simon Jones has resigned as Chairman of the Parish Council. Simon has held the position for a number of years and we are sorry to lose him. Our thanks go to him for his work on the Council and we wish him well for the future.

We are pleased to welcome two new Councillors, Jerry Forskitt and Barry Cook who have recently joined the Council.

Simon's resignation currently leaves us with a vacancy to fill and looking ahead into May 2025 when the local elections take place we may have other vacancies. The Parish Council plays a valuable role in the care of our community and environment and without a Council the village interests would suffer as it would, by necessity, be managed by West Northants Council. Please contact the Clerk, Ann Addison and put your name forward if you feel you are able to contribute to the work of the Parish Council.

The following is an update on the key areas that the Council manages in the village.

**Finance:**

The Council is currently working on setting the budget for 2025/26, the Precept has to be submitted to West Northants Council by January at the latest.

We have managed to keep healthy balances throughout the year in spite of rising costs. The Council does its best to maintain the village to a reasonable standard whilst remaining mindful of the effect that a raise in the Precept has on the community's purse strings.

Areas to be budgeted for include lighting, grass mowing, general village maintenance, emptying dog waste bins along with the maintenance of the village park and its equipment.

The War Memorial is in need of urgent repair, it is covered by the listed building regulations and repairs come at a premium. However, we have identified funds which will enable us to carry out repairs to the structure

but craftsmen who have the skills to carry out this work are few and far between so we may have to wait for some time to get the work done.

Over the years our list of volunteers has diminished and this has meant we have had to employ contractors often at considerable cost. Offers of support will be gratefully received and no you wouldn't be expected to undertake anything too onerous! Please contact our Clerk, Ann Addison if you can help. [ann.addison97@gmail.com](mailto:ann.addison97@gmail.com)

### **SEGRO Rail Freight Development:**

Along with other local Councils we have been allocated funds as compensation for the development right on our doorstep. The Council has drawn up a list of projects that will be of benefit to our community, these include Vehicle Activated Signs (VAS) to be sited on Rectory Lane and the Collingtree Road near the Park.

Regrettably the funding for this application which was first submitted in January this year and resubmitted again in September has not been forthcoming.

Other projects which include pavement resurfacing, antique lights around the village and soft pour to the Park slide are still in abeyance. The Clerk is in contact with WNC over the delay.

### **Planning:**

Village applications are dealt with when they are published by WNC and reported at the Parish Council monthly meetings.

The Council has asked for two proposals to modify houses in the High Street, that sit in the Conservation area, to be reconsidered by WNC.

There is no further news on Kalvec Warehouse proposals for the old nursery and abattoir sites on the outskirts of the village.

We were dismayed to discover that Harworth Group intended to submit an application to build 1.6 million sq ft of warehouses opposite the rail freight terminal (6.4 million sq ft) on Courteenhall Estates land. This was the motorway constructors site and we had anticipated it would be returned to green space once the smart motorway works were completed. The

Parish Council will, of course, be objecting once the plans have been submitted, previously the site had been earmarked for green infrastructure and biodiversity enhancement. Questions are being asked over an apparent loss of documentation!

### **Lighting:**

Parish Councillor, Jerry Forskitt has taken over the 'lighting portfolio' and will be checking for faults, if you find a street light out of order please report it to the Clerk in the first instance.

### **Village Maintenance:**

As winter approaches grass mowing is coming to an end and arrangements have been made for footpaths to be cleared of Autumn leaves.

Grassed areas in the Stockwell area are the responsibility of Grand Union Housing, it has been reported that they are not being cut regularly. This matter will be raised with GUH.

Volunteers have been working in the Church Yard, ivy on the stone walls has been cut back and grass cut in the burial ground. Our thanks to all the helpers.

### **Play Park:**

The seesaw has developed a fault and is now out of action, please heed the notice.

The play tunnel reconstruction is underway, finishing touches are necessary.

Speaking of volunteers, the park is ready for a tidy before winter sets in and a working party is planned. If you would like to join the working party please contact Ann Addison.

The Parish Council sends good wishes to everyone for a very happy Christmas and a 'peaceful' New Year.

### **Medicine Collection contacts:**



Nicola James	-	07989 307670
Jacqui Jones	-	07728 027507
Katie Marshall	-	07792 842358

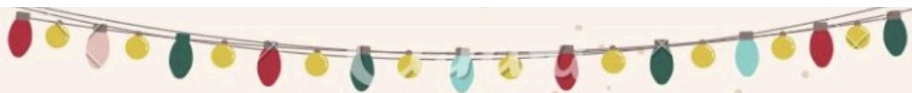
As a reminder this volunteer service is offered to assist those who are physically unable to travel to collect their prescriptions.

# Remembrance Sunday

On Sunday 10th November the village remembered those from Milton Malsor who lost their lives fighting for their country. A Church service was held, followed by a procession down to the War Memorial, where more villagers gathered to pay their respects. The names of the fallen were read out and the bugle rendition of the Last Post was played by Rebecca Ludlow.

Wreaths were laid by the different village organisations and by representatives of military services. Following the War Memorial service, refreshments were served in the Village Hall.





## CHRISTMAS IN MILTON MALSOR



**THE MOST WONDERFUL TIME OF THE YEAR!**

## CHRISTMAS ON THE GREEN

🎄 Christmas in Milton Malsor wouldn't be the same without our jolly Christmas songs by the village Christmas tree!

Join us on The Green for a merry session of singing, scrumptious mince pies, warming mulled wine, and if we're on Santa's nice list, a surprise visit from the big man himself! 🧑🏻🎅



**THURSDAY,  
19th  
DECEMBER  
6.00PM**



**COME JOIN US!**



**WITH A SPECIAL THANK YOU TO STOKE GOLDINGTON TREES  
FOR DONATING MILTON MALSOR, ONE OF THEIR BEAUTIFUL TREES**



## Christmas Fundraisers in Support of our lovely Village School

### Handmade Wreath Sale:

Our talented team have been making some more beautiful wreaths with moss backs for longevity. These are available to order now to get your front doors and gates ready for the festive season.

**Please get in touch with us if you'd like to order one:**

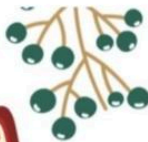
**Email: [thefriendsofmiltonschool@gmail.com](mailto:thefriendsofmiltonschool@gmail.com)**

**Call/Text: Laurie 07793 001638**

**Handmade Wreaths**

From the Friends of Milton Parochial Primary School  
12" wreath £34. Made to order in your own choice of colours  
Fresh, natural materials. Proceeds go towards school fundraising,  
To order, please email [thefriendsofmiltonschool@gmail.com](mailto:thefriendsofmiltonschool@gmail.com)

**We'd also like to say a big thank you to all those that attended our Wreath Workshops recently; what lovely creations you all made!**



**PLEASE SAVE THE DATE FOR  
OUR CHRISTMAS FETE!**

**Friday 13th December  
3.30-5.00pm**

**Milton Parochial Primary  
School Hall.  
Everyone Welcome!**

**Please join us for  
Tombola, Games,  
Refreshments and more...**

**We are busy planning, but  
we look forward to seeing  
you there.**



## FOMS Christmas Online Auction:



Please keep your eyes peeled on the Milton Village Facebook page where a link will be shared to join our Friends of Milton School Facebook page, ready to access our **2024 Online Christmas Auction**.

The auction will be launched on **Sunday 24<sup>th</sup> November** where you will have the opportunity to bid on a range of amazing items, including:

- Ninja Air Fryer
  - Comedy Night Tickets
  - Gas BBQ
  - Robot Vacuum Cleaner
  - Dance Class Sessions
  - Stonyfield Wine
  - Gift Sets
- and many more!

The auction will run until Sunday 15<sup>th</sup> December 2024.  
Terms and Conditions will apply.

Why not bid for items to give as Christmas gifts? Or just to treat yourself!

**A huge thank you to all our amazing sponsors whose links will be shared on the auction lots.**



**Wishing you all an enjoyable festive season and a very happy New Year!**

**From Team FOMS**



## Are you looking for a friendly and welcoming school?

Milton Parochial Primary School offers a positive and nurturing place to start your child's educational and social journey.

If you would like to learn more about our school or arrange a visit, then please do get in touch - **we would love to meet you!**



01604 858816



[www.milton.northants.sch.uk](http://www.milton.northants.sch.uk)



Milton Parochial Primary School  
Milton Malsor,  
Northampton NN7 3AT

PROUD TO  
BE PART OF  
P  
DET



If you would like to learn more about our school or arrange a visit, then please do get in touch - **we would love to meet you!**



01604 858816



[www.milton.northants.sch.uk](http://www.milton.northants.sch.uk)

### A warm welcome awaits you and your family at Milton Parochial Primary School.

As a village school on the outskirts of Northampton, we offer a caring child centred approach to families where we support every child to thrive.

- We offer an engaging curriculum where your child will be encouraged to be the best that they can be. At Milton, every child is supported to grow, and their interests and abilities nurtured.
- As a smaller setting, we offer a sense of family, where all staff will know and care for your child as an individual. We promote positive relationships, focusing on the importance of well-being for all.
- As an attractive school set in amazing grounds, we are able to offer your child opportunities to take learning out of the classroom. Our children thrive through active play and learning, using our fabulous range of outdoor spaces.
- Wrap-around care is offered through our excellent breakfast club and after school provision. A range of sporting and creative activities provide flexible childcare for our busy working families as well as a chance to extend social and learning opportunities.

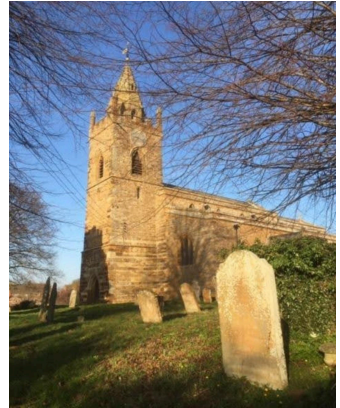
Milton Parochial Primary School  
Milton Malsor,  
Northampton NN7 3AT

PROUD TO  
BE PART OF  
P  
DET



## *Church of The Holy Cross Milton Malsor*

Good Friends of Holy Cross Church thank you for your support through the past months. They have been busy but good to see so many people come to our events.



We are now preparing for Advent starting with our Christmas Tree Festival on the 7th & 8th December. Anybody is welcome to participate be they a family, a street or organisation. The theme this year should you choose to follow it is The Twelve Days of Christmas. Setting up your display will be on Friday 6th at 10am - 3pm. We shall be open on Saturday 10am - 4pm & on Sunday 11am - 4pm. Refreshments will be available on both days with homemade soup at lunch times. There are a few spaces should anybody wish to have a stall. Contact Jane for details 07729311988.

Before the big day there is to be a discussion group held in The Boat Inn at Stoke Bruerne on the 10th & 17th December starting at 10 am. All welcome to join in.



Holiday Clubs will be held 10-12 at Blisworth church on December 14th and at Milton Malsor church on December 21st. All children are welcome to join on either or both days. These days will take the form of crafts & stories of this advent time of year.

The Christmas Carol Service is on 15th December at 4pm.

Christmas Eve service 3pm in the form of a family service with participation by the children.

Christmas Day will be Celebrated with a Eucharist service at 9.30am.

We at Holy Cross will look forward to greeting you all at these special services and occasions, in celebration of the birth of Jesus.



### **THE CHURCH NEEDS YOUR HELP:**

A tidy up in the church yard is planned to remove ivy from gravestones and generally cut back unwanted vegetation. If you are able to lend a hand please contact our Church Warden Gill Franklin via email [gill&collin@btinternet.com](mailto:gill&collin@btinternet.com). Any help you can give will be much appreciated.



# **Build your skills. Boost your happiness. Connect with your local community.**

Scouts isn't just good for young people. It's good for you too.

We help young people - and adult volunteers -  
step up, speak up and find their place in the world.  
We build skills for life.

Been a Leader before or would like to start something new  
we would love to hear from you.

Contact us on [collingtreemiltonmalsorscouts@gmail.com](mailto:collingtreemiltonmalsorscouts@gmail.com)  
to find out more about our volunteering opportunities.



**Scouts**

**1st Collingtree & Milton  
Malsor**

**#GoodForYou**

Copyright 2021 The Scout Association Registered Charity numbers 306101/SC038437



## **MILTON & COLLINGTREE WI**

At our October meeting Becky from 'Pink Wellie Posies' brought along her wonderful selection of home dried flowers and under her guidance some members made beautiful tied buttonhole sprays.



Prior to this latest newsletter we will have had a talk on 'Wildlife in the Nene Valley' with a focus on the Rushden Lakes beaver project.

The December meeting on Thursday 12th in the Village Hall promises to be a fun and sociable evening of Christmas themed crafting.

In the New Year on 9th January, Margaret, one of our members, will speak to us on Hypnosis. This meeting will be held in [Raynsford House](#), at the usual time 7.30pm.

On 13th February in the Village Hall we will hear about the work of 'The Lowdown' the Mental Health Charity based in Kingswell Street, Northampton. They cover a wide range of issues working with young people to provide free and confidential support services.

We always say visitors are most welcome and we mean it, however, we do make a small charge of £5 which includes refreshments and raffle.



More information can be obtained from Jacqui 07728 027507, we are also on Facebook, Milton Malsor & Collingtree WI.



Milton Football Club

## CHRISTMAS RAFFLE 2024

**Prizes Include: £600 Conveyance - £400 Will Vouchers -  
£80 Meat Hamper - £40 Xmas Hamper  
- Car Valet Voucher  
and many other prizes.**



To be drawn at:  
**MILTON FOOTBALL CLUB**  
on



**Saturday 7th December, 2024 AT 9.00pm**

Promoter: Mike Billingham, 35 Willow Crescent, Gt. Houghton NN4 7AP

### *Major Raffle Prizes*

- ❖ £600 Conveyancing Voucher - Arnold Thomson Solicitors, Towcester
- ❖ £400 Will Vouchers - Montgomery Finance Services, Raunds
- ❖ £80 Meat Hamper - CDC Meats, Blisworth
- ❖ £50 Hair Treatment and products - The Neighborhood Barbershop, Northampton
- ❖ £40 Christmas Hamper -
- ❖ Free Car Valet Service -
- ❖ Free 4 ball Round of Golf - Northampton Golf Club
- ❖ Two Packs of Luxury Vinyl Tile Flooring - Deakin & Peck Milton Keynes

*Plus Many Further Prizes*

**Tickets £1** available from the clubhouse Wednesday Evenings and Saturday on match days, or contact any club member.

Alternatively you can purchase tickets on line by contacting [mike.billingham25@gmail.com](mailto:mike.billingham25@gmail.com)

Payment for raffle tickets can be made to following account:  
Milton Football Club: Sort 40-35-04: Account 20589047

**MILTON FOOTBALL CLUB**, Collingtree Road, Milton Malsor, Northampton NN7 3AU

Chairman: Mike Billingham: 35 Willow Crescent, Gt Houghton, NN4 7AP (07871 933 850)  
Secretary: Len Mackintosh: 71 Buttmead, Blisworth, Northampton NN7 3DQ (07729 127 614)  
Treasurer: Mike Billingham: 35 Willow Crescent, Gt Houghton, NN4 7AP (07871 933 850)



# GHOST HUNT

Huge thanks to the village for another fabulously scary Ghost Hunt on Friday 1st November. Particular thanks to those Spooky individuals who put so much thought and effort into making their ghost spots better than ever, we literally couldn't do it without you. Thanks to 'Mrs Excel' herself Nic James for the bookings and of course the lovely Georgina and her team at the Greyhound for hosting. This event helped us raise some funds for the Christmas sing song on the Green which is happening on Thursday 19th December.



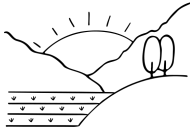
Lastly well done to our joint winners this year, 'Saw' and 'Pennywise' you were both truly fantastic. Anyone wanting to be a ghost next year? Start planning.....



*Annie & Kimberly*



# BOO!

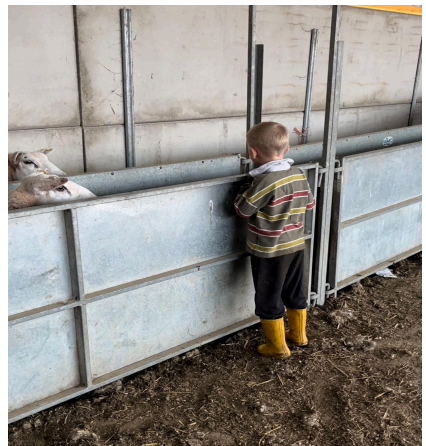


## LIFE ON THE FARM IN AUTUMN

We pregnancy scanned the cows around a month ago and all but 2 were in calf. Which is a good result. This means the Bulls did their job. Unfortunately this will be our last year calving cows. This is due to the fact we have lost the grazing we rented alongside the M1 (Collingtree side) due to the houses that are being built. Due to this we have been buying cattle from market to fatten which enables us to provide beef for the food chain.

The Sheep that saw the Tup first have also been scanned and they have been marked up with a different colour sheep marker which will relate to how many lambs they are carrying. The bigger flocks of sheep are currently with the Tups and they will be scanned and marked up normally on New Year's Eve.

We have been watching closely for blue tongue in the sheep and cattle, especially now we are in a restriction zone, this means that cases have been discovered in the area. Being in the restriction zone means we are unable to move Livestock out of the zone for either grazing or for sale.



In relation to the arable work, after a wet start to drilling David has managed to get the majority of the drilling done, and if the weather stays dry then plans will change and David will be able to get some more drilling done, easing the drilling that would normally happen in the spring.

Fodder beet is growing nicely ready for winter feed, this will start being harvested about the start of December, and will be lifting little and often.

We still have plenty of sausages for sale, for those interested in trying some.

On a social note, we took part in a Halloween Tractor run around South Northamptonshire where we helped raise around £3,000 for Cynthia Spencer. We will be taking part in the Christmas tractor run in Brackley on the 8th of December.

Ally



## A reminder for dog owners

Please think of others who walk our footpaths and pavements and pick up after your dog. There are 6 Dog Waste Bins around the village to dispose of your bagged dog poo so please use them, it is an offence not to pick up after your dog.

***Be responsible, bag it and bin it!***





---

## Milton Malsor Poors Trust

---



This Poor's Trust was started in the 18th Century and has long since outlived it's real purpose to provide bread and coal for the needy of the village at Christmas time.

The Trust is looked after by both Alison Treharne and Tara Mortimer.

This old custom is kept alive by making a small cash payment to needy residents who fall in to the below category;

- Pensioners over the age of 65.
- Residents who are unable to work due to sickness or a reasonable cause.
- You must have resided in the village for a minimum of 3 years.

**For those eligible collection of donations will be at Raynsford House on 20th December between 10am and 11am.**

If you believe you are eligible please contact Alison on 07846444260. (If you received monies last year you do not need to make contact as I have placed your name on this years list)



Many thanks  
*Alison and Tara*





## OUR VILLAGE HALL

Our first meeting since the Summer break took place on 24 September and we have the following updates to share as we approach Christmas:

- Village hall and Holy Cross volunteers, once again set up and hosted the post Remembrance Service refreshments in the hall on 10 November – it was well attended and Gill, on behalf of the Holy Cross church, passed on their thanks for use of the hall.
- We supported a Mindfulness Charity Event on 9 November in aid of the Air Ambulance.
- A second badminton group will start on Tuesdays, 4.30pm – 5.30pm due to the current one being full. This one will be run by Toni – please see the website or notice board for further details.
- The Indoor Bowls Club contact details have also been updated – Mavis and Tina’s details can be found on the website if you are interested in joining.
- Ken Nicoll, the chair of Trustees at Greens Norton Community Centre is creating a forum to bring together volunteers from local village halls as we navigate bookings, costs, fundraising and advertising wider local events...to name a few topics .I will share updates once we have met. I can share 2 Greens Norton events - Sunday 17 November, 10.30am – 3.30pm, an Art and Craft Show and Saturday 25 January, 2025 at 7.30pm, a Burns’ Night Celebration, £30. See their website for further details. I will share open events being held in Milton with them too.
- An updated Diversity and Equality Policy has been drafted, ready to agree at our next meeting on 25.11.2024.
- We have had to repair a couple of incidents of damage and wear and tear to taps and doors; we appreciate users highlighting issues promptly and members (and their spouses...thank you Dave) for carrying out prompt repairs.

Future Plans include:

- Though we agreed on a timely fixed energy rate before costs rose in October, we will monitor costs and usage for all utilities over the coming months to ensure the hiring rates are not running at a loss.
- Building on new links with other village community groups within the forum to ensure the needs and opportunities of all are met.

Our planned meeting dates have changed from Tuesdays to Mondays, these are shown below, all at 7.30pm in the James Room, MMVH:

- 25 November 2024
- 10 February 2025
- 14 April 2025. The provisional date for the next AGM remains as Friday 25 April 2025.

Please contact Penny Howell (Chair) – [howell.penny67@gmail.com](mailto:howell.penny67@gmail.com) (07702004860) or Keith Parker (Secretary) – [patricia.parker15@btinternet.com](mailto:patricia.parker15@btinternet.com) (07745385346) if you would like to add your support or if you wish to advertise local events/ groups on our external notice board or within our new forum group.

Thank you for your on-going support, from all the committee members.

# Get Up & Go



## Strength and balance exercises

Falls prevention and reduce the risk of injury programme providing strength and balance for those adults wanting to improve their mobility and confidence.

**For more information:**  
[stepforwardwithlewis@gmail.com](mailto:stepforwardwithlewis@gmail.com)  
07423074891  
[stepforwardwithlewis.com](http://stepforwardwithlewis.com)



Location	Day	Time
<b>Far Cotton Community Centre (Downstairs)</b>	Mondays	11:15am
<b>Hardingstone Village Hall (Back room)</b>	Tuesdays and Thursdays	10:00am
<b>Wootton Community Centre</b>	Wednesdays ----- Fridays	11:10am ----- 1:10pm
<b>Milton Malsor</b>	Thursdays	2:20pm
<b>Abbey Centre Baptist Church (East Hunsbury)</b>	Fridays	10:00am

## VILLAGE GROUPS

### Art Group:

Wednesday, Village Hall, 1.30-3.30pm in term time. The group is self help, with regular visiting artist demos and workshops. Contact Marion 01604 859109 or Anne Manson 01604 858326 (email: [stuart.manson@btopenworld.com](mailto:stuart.manson@btopenworld.com))

### Beavers:

Wednesday, Village Hall, 5.30- 6.30pm in term time (age 6-8). Contact Group Scout Leader Carol Fraser 01604 862717 (email: [GSL.1CMM@gmail.com](mailto:GSL.1CMM@gmail.com))

### Brownies:

Monday, Village Hall 6.00-7.15 pm in term time (age 7-10) Contact Christine Ladd (Brown Owl) 01604 705910 (email: [christine.ladd@btinternet.com](mailto:christine.ladd@btinternet.com))

### Crafty Yarns:

We meet on the first and third Wednesday of each month from 2.00 at Raynsford House. Contact Tom McManus on 07845 962708

### Cubs:

Wednesday, Village Hall, 6.30-7.45pm in term time (age 8-10½) Contact Group Scout Leader Carol Fraser 01604 862717 (email: [GSL.1CMM@gmail.com](mailto:GSL.1CMM@gmail.com))

### Milton FC:

Has two adult teams. For membership and club hire details contact Len Mackintosh 01604 858145

### Milton Parochial Primary School:

Mrs Rachel Scott - Head of School 01604 858816  
email: [office@milton.pdet.org.uk](mailto:office@milton.pdet.org.uk) Facebook: Milton Parochial Primary School

### Scouts:

Wednesday, Village Hall, 7.45-9.15pm in term time. Contact Carol Fraser Group Scout Leader 01604 862717 (email: [GSL.1CMM@gmail.com](mailto:GSL.1CMM@gmail.com))

### Short Mat Bowls:

Village Hall Bowls Organiser 07718 172332 or [gillandcolin@btinternet.com](mailto:gillandcolin@btinternet.com)

### WI:

Contact Jacqui Jones 07728 027507

# MILTON MALSOR PARISH COUNCIL

**Parish Clerk** (and lead West Northants Unitary Councillor for Milton Malsor)  
Ann Addison The Paddocks, Baker Street Gayton Northampton NN7 3EZ  
☎ 01604 858226 Email: [ann.addison97@gmail.com](mailto:ann.addison97@gmail.com)

## Chairman

Edmund James	Finance	07899 996279
--------------	---------	--------------

## Vice Chairman

Janet Winchester	Maintenance & Environment lead (All Council members) Newsletter & Grass Mowing	01604 858999
------------------	--	--------------

## Council Members

Neil Jagger	Village Park	01604 859135
Paul Heath	Planning & Highways	01604 859453
Jerry Forskitt	Street Lighting & Flower Planters	07484 143671
Katie Spruels	Website & Newsletter	07971 839621
Brenda Jenks	Finance & Newsletter	07775 816158
Barry Cook		

## Parish Responsibilities

Neil Jagger	Trees & Environment	01604 859135
Janet Winchester	Footpaths Warden	01604 858999
Barry Cook	Dog Warden	
Colin Neal	Website Manager	
Katie Spruels	Facebook Admin	

## Other Useful Contacts

Penny Howell	Milton Malsor Village Hall	07702 004860
Karen Cooper	West Northants Unitary Councillor	07753 638180
Adam Brown	West Northants Unitary Councillor	07714 255077
Nicola James	Medicine Collection	07989 307670
Parish Council Website	<a href="http://www.miltonmalsorparishcouncil.org.uk">www.miltonmalsorparishcouncil.org.uk</a>	
Facebook Group	<a href="http://www.facebook.com/groups/MiltonMalsorVillage">www.facebook.com/groups/MiltonMalsorVillage</a> (if you're not already a member, ask to join)	